

## SPECDILAS D series

# SPECDILAS D-XXXX

### DFB lasers for spectroscopy

- Distributed Feedback diode laser with exact match to any customer specified wavelength
- hermetically sealed subcomponent, SOT 5.6 package, window AR coated and tilted
- available for following wavelength range  $\lambda$ : 1200 – 1580 nm
- typical achievable absorbance:  $10^{-6}$

### Typical specifications

	min.	typ.	max.	unit
operation temperature at case	0		70	°C
laser diode: direct forward current		100	200	mA
optical peak output power at 25°C (for $\lambda < 1600$ nm)	1	2	5	mW
side mode suppression ratio (SMSR)	- 20	- 25	- 40	dB
threshold current		30	60	mA
emission wavelength at room temperature	$\lambda - 1.0$	$\lambda$	$\lambda + 1.0$	nm
$d\lambda / dT$		0.1		nm / K
$d\lambda / dI$	1		3.5	GHz / mA
line width		10	20	MHz
far field FWHM	lat. 25 / vert. 50			°
differential series resistance		5	10	$\Omega$

# Ordering information

D - XXXX

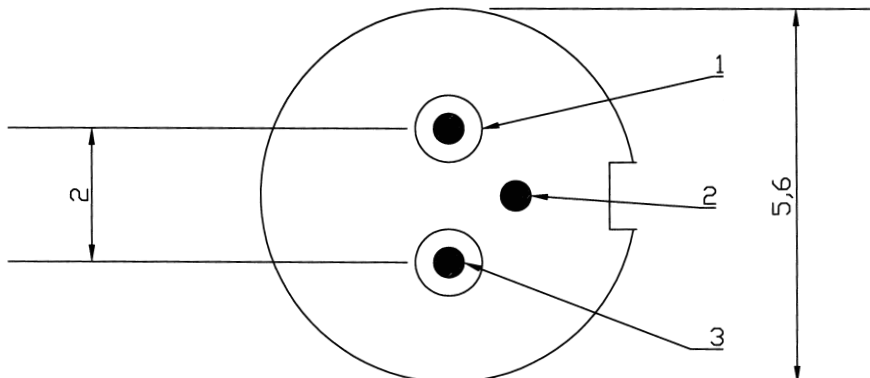
XXXX = Wavelength (nm)



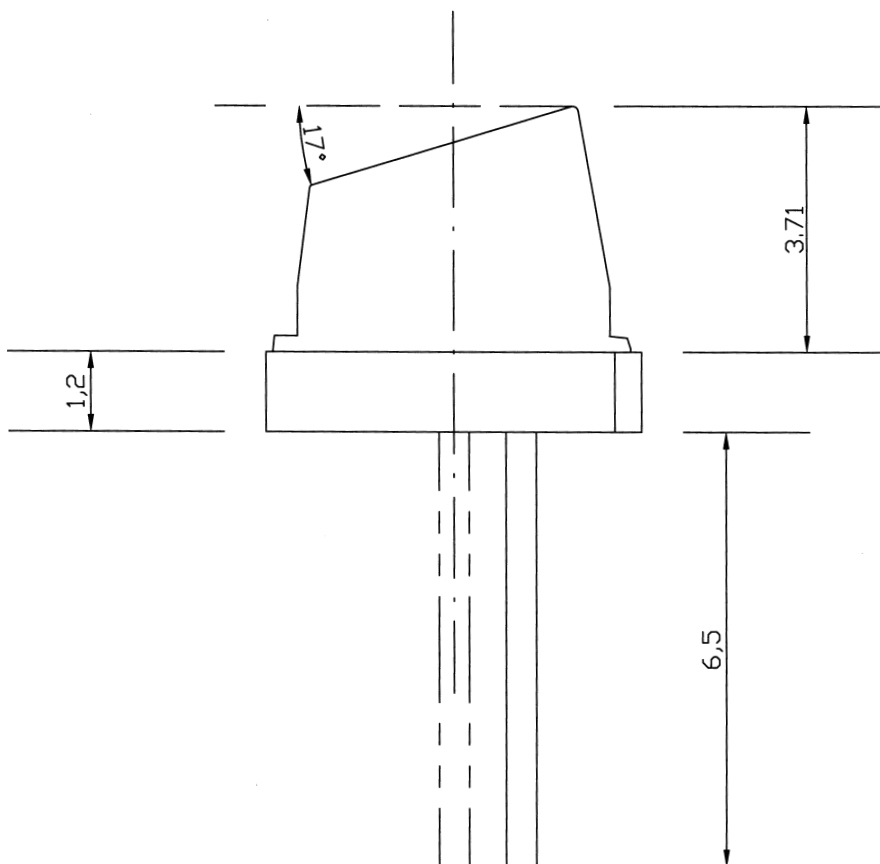
## Example:

D-1512: wavelength  $\lambda = 1512$  nm, SOT 5.6 package

This means that laser must meet 1512 nm somewhere inbetween 15 °C and 35 °C.



- 1. Laser (Anode (CG))
- 2. Ground
- 3. not connected



**SOT 5.6 package**

All specifications are subject to change without notice.

LASER COMPONENTS (UK) Ltd. 4 Gloucester Avenue, Chelmsford, Essex. CM2 9LD. Tel: 01245 491 499  
Fax: 01245 491 801 Internet: <http://www.lasercomponents.co.uk> Email: [info@lasercomponents.co.uk](mailto:info@lasercomponents.co.uk)